

REP24 C03

Electronic Proportional Heat / Cool Thermostat



GB

Installation Instructions
User Instructions

Danfoss

Index



Installation Instructions
User Instructions

3-6
8

Installation Instructions

Please note

This product should only be installed by a suitably qualified electrician or heating installer. The installation must comply with local Building Regulations and Wiring Regulations, including any competent person requirements that may exist.

Specification

Thermostat features	
Temperature Range	10-30°C
Manual Fan Speed Selector	Yes
Fan Output	3 (1) A, 10-230Vac, Type 1B
Thermostat Heat, Off, Cool Selector	Yes
Power Supply	24 Vac \pm 15%, 50/60Hz
Control Method	P+I, 2k Proportional Band
Dimensions (mm)	110 wide x 90 high x 40 high
Design Standard	EN60730-2-9
Rated Impulse Voltage	2.5Kv
Ball Hardness Test	75°C
Control Pollution Situation	Degree 2
Temperature Accuracy	\pm 1°C
Control Output	0-10 Vdc
Common Supply	10 - 230 Vac

This thermostat is designed for fan coil and chilled beam applications alongside proportional valves and actuator systems where a 0-10v proportional control output is required.

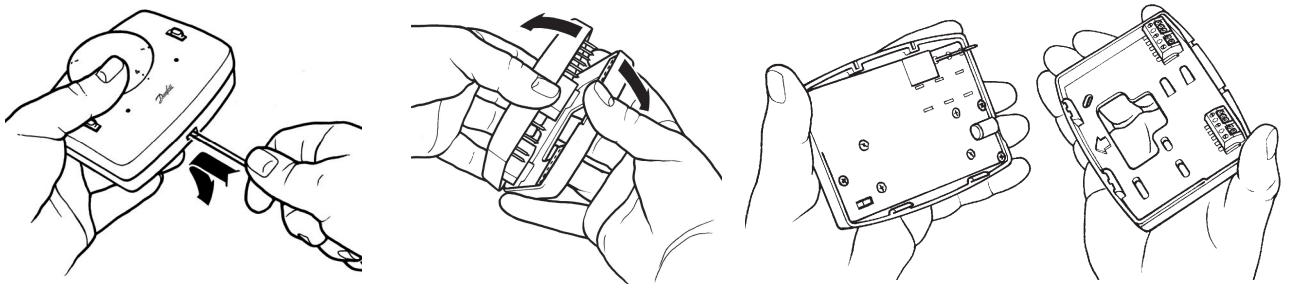
The thermostat has a 3 speed fan output selectable via a switch on the front of the unit.

The operational mode of the fan (auto or continuous is selected at time of installation via DIL switches accessible on the rear of the unit.

When the unit is in standby the fans are switched off.

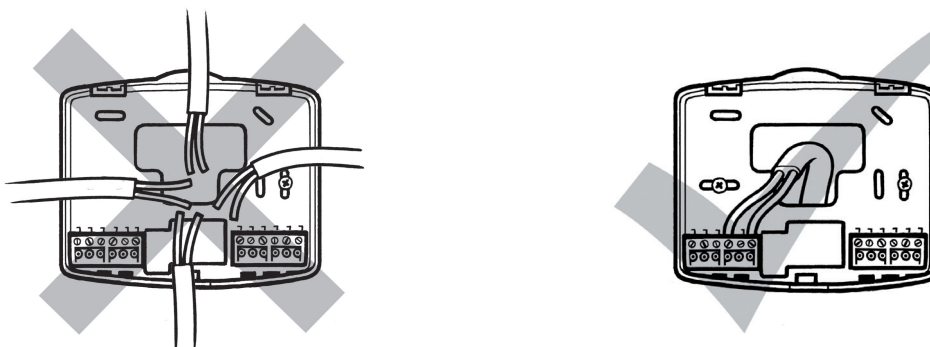
Installation

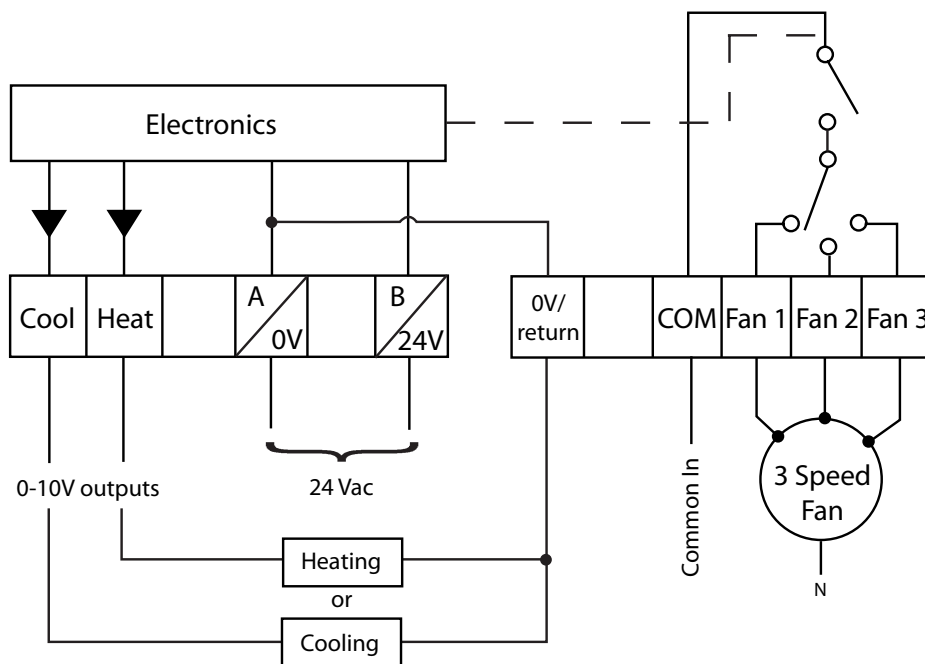
- ❑ First remove the wallplate from the back of the unit.



- ❑ Fix at a height of approximately 1.5m from the floor, away from draughts or heat sources such as a fan-coil outlets, sunlight or office equipment.

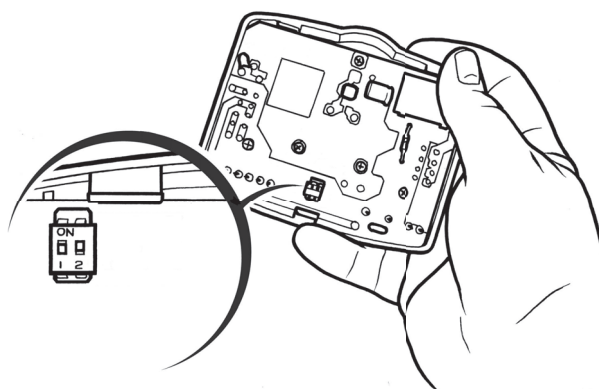
Wiring







Commissioning

Prior to re-fitting the thermostat to the wallplate, the DIL switches on the rear of the unit must be set to the desired setting.



			Sw	On
1	Fan Con		Fan	Auto
2	MOT		WAX	

DIL Switch Descriptions

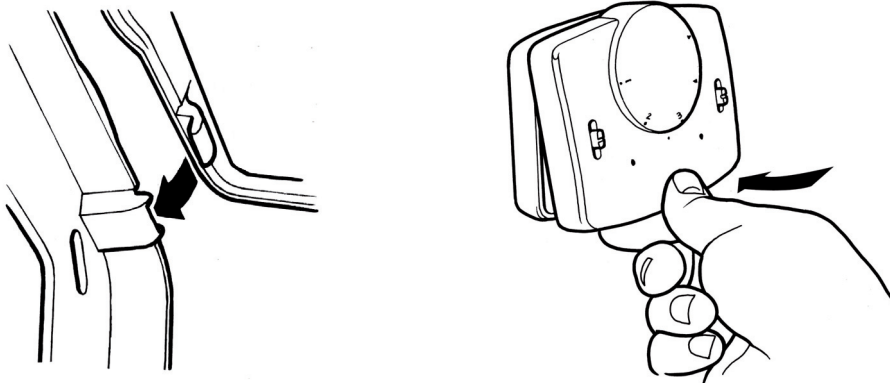
Switch 1: *Fan Con* - Fan will run whenever thermostat is in heating or cooling mode.

Fan Auto - Fan will run whenever temperature is 0.2°C or more above/below (depending on heat/cool mode) setpoint. When temperature reaches setpoint, the fan will switch off.

Switch 2: *MOT* - Motorised valve actuator selection.
WAX - Wax valve actuator selection.

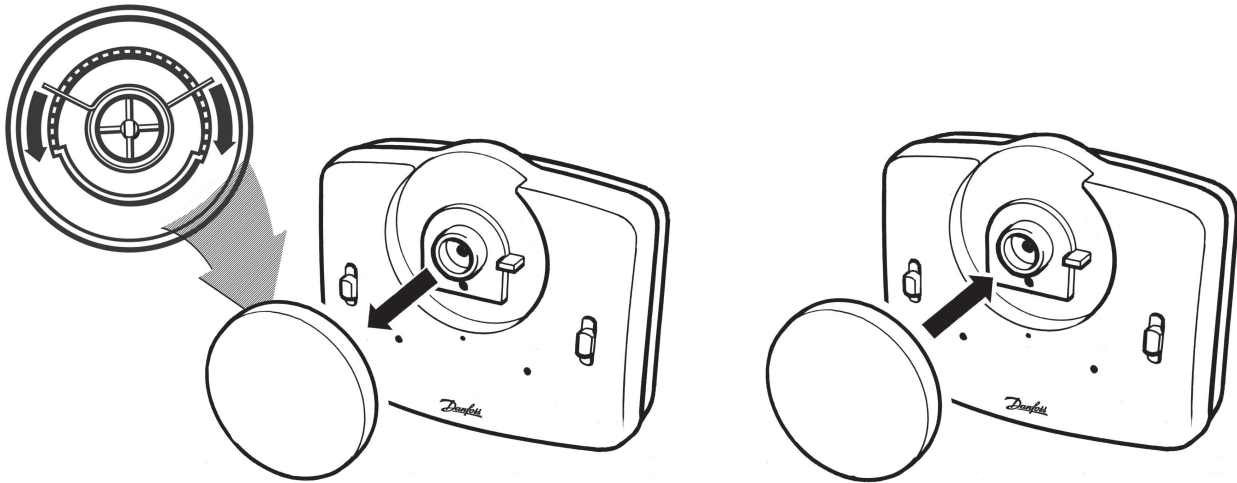
Mounting thermostat to the wallplate

- ❑ To mount the thermostat to the wallplate, align the tabs on the top of the thermostat with the apertures in the wallplate and hinge the thermostat down, pressing firmly to engage the securing clip in the wallplate.



Locking and limiting

- ❑ To lock or limit the setting range turn the setting dial to 3 and remove knob.
- ❑ Position the locking springs on the rear of the dial to the desired position and re-mount the knob ensuring that number 3 on the dial aligns with the reference mark on the case.





User Instructions

Setting the temperature

Turn the setting dial to the required temperature.

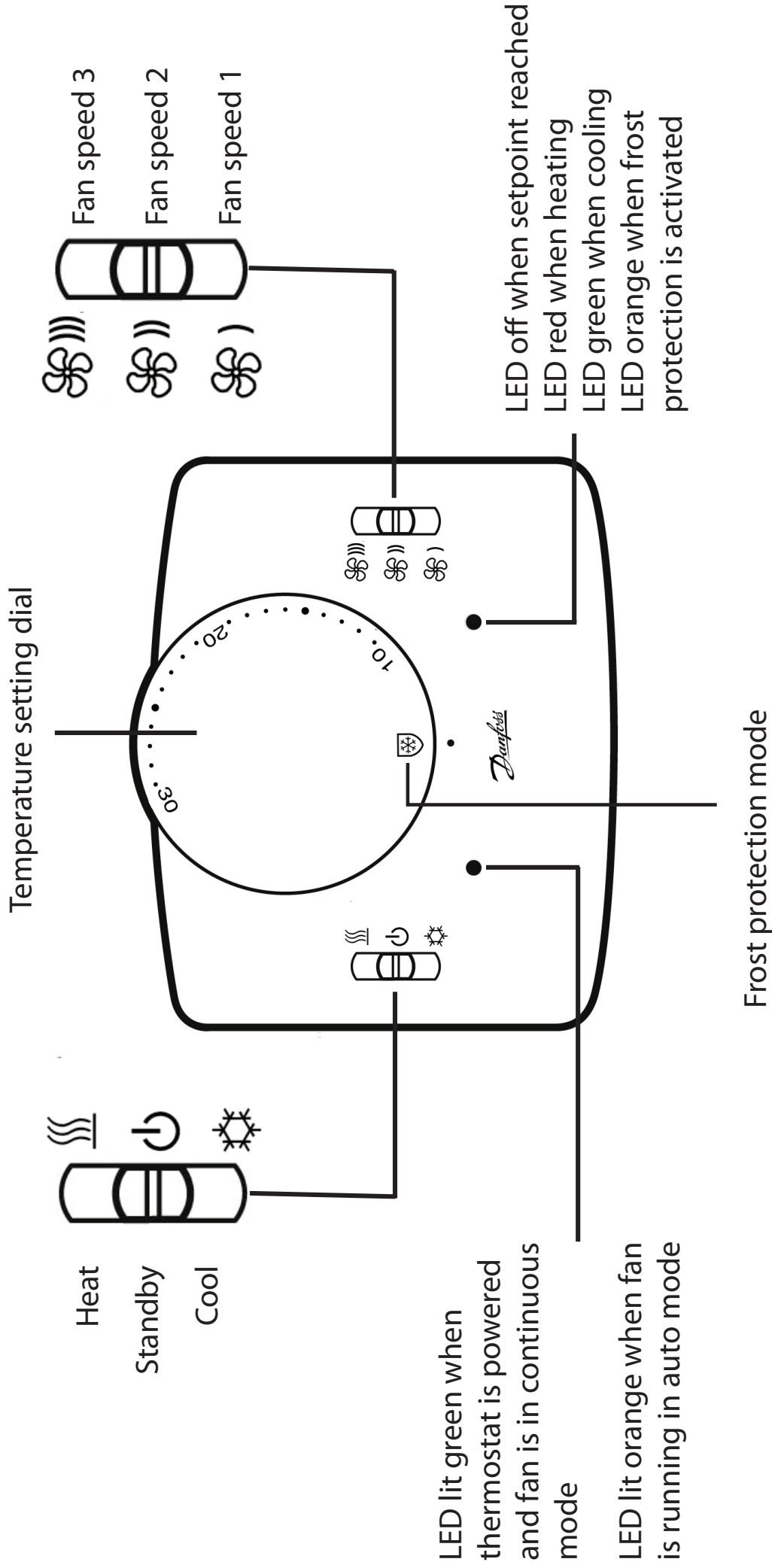
Frost Protection

To activate frost protection, turn the dial below 10°C. Frost protection becomes active at 8°C. If the temperature in the room drops below 8°C then the output will activate.

When frost protection is activated the right LED will turn orange.

Standby Mode

In cooling mode, the standard frost protection is not available; instead there is standby mode. When the dial is turned past 10°C the unit enters standby mode and cooling will be inactive until the dial is turned up past 10°C.



www.danfoss.com/BusinessAreas/Heating

This product complies with the following EC Directives:

Electro-Magnetic Compatibility Directive.

(EMC) (2004/108/EC)

Low Voltage Directive.

(LVD) (2006/95/EC)

